

SAMPLE BALLOT

Whitman County, Washington

Special Election, February 14, 2023

Instructions

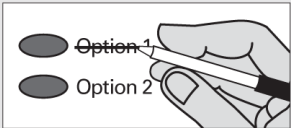
How to vote



Use a dark blue or black ink pen to completely fill in the oval to the left of your choice.

Vote for one in each race. If you vote for more than one, no votes will be counted for that race.

If you make a mistake



Draw a line through the entire measure response.

Then you may make another choice.

Who donates to campaigns?

View contributors for candidates and measures

Public Disclosure Commission

www.pdc.wa.gov
Toll Free (877) 601-2828

START VOTING HERE

Lamont School District No. 264

Special Election - Proposition No.1

REPLACEMENT EDUCATIONAL PROGRAMS AND OPERATION LEVY

The Board of Directors of Lamont School District No. 264 adopted Resolution No. 6-2022, concerning a proposition to finance educational programs and operation expenses. This proposition would authorize the District to levy the following excess taxes, in place of an expiring levy, on all taxable property within the District, for support of educational programs and operation expenses not funded by the State of Washington:

Collection Year	Estimated Levy Rate/\$1,000 Assessed Value	Levy Amount
2024	\$2.59	\$132,000
2025	\$2.53	\$132,000

all as provided in Resolution No. 6-2022 and subject to legal limits on levy rates and amounts at the time of levy. Should this proposition be approved?

- Levy, Yes
- Levy, No

Colton School District No. 306

Special Election - Proposition No. 1

REPLACEMENT EDUCATIONAL PROGRAMS AND OPERATION LEVY

The Board of Directors of Colton School District No. 306 adopted Resolution No. 2211-37, concerning a proposition to finance educational programs and operation expenses. This proposition would authorize the District to levy the following excess taxes, in place of an expiring levy, on all taxable property within the District, for essential educational programs and operation expenses not funded by the State of Washington:

Collection Year	Estimated Levy Rate/\$1,000 Assessed Value	Levy Amount
2024	\$2.26	\$398,947

all as provided in Resolution No. 2211-37. Should this proposition be approved?

- Levy, Yes
- Levy, No

Oakesdale School District No. 324

Special Election - Proposition No.1

REPLACEMENT EDUCATIONAL PROGRAMS AND OPERATION LEVY

The Board of Directors of Oakesdale School District No. 324 adopted Resolution No. 02-2223, concerning a proposition to finance educational programs and operation expenses. This proposition would authorize the District to levy the following excess taxes, replacing an expiring levy, on all taxable property within the District, for educational programs and operation expenses not funded by the State:

Collection Year	Estimated Levy Rate/\$1,000 Assessed Value	Levy Amount
2024	\$3.68	\$667,000
2025	\$3.68	\$667,000
2026	\$3.68	\$667,000
2027	\$3.68	\$667,000

all as provided in Resolution No. 02-2223 and subject to legal limits on levy rates and amounts at the time of levy. Should this proposition be approved?

- Levy, Yes
- Levy, No

LOCAL ELECTIONS WILL APPEAR ON THE BALLOT ONLY IN THE AREA ELIGIBLE TO VOTE ON THEM

**SAMPLE BALLOT COMPILED BY:
WHITMAN COUNTY
ELECTIONS DEPARTMENT**